

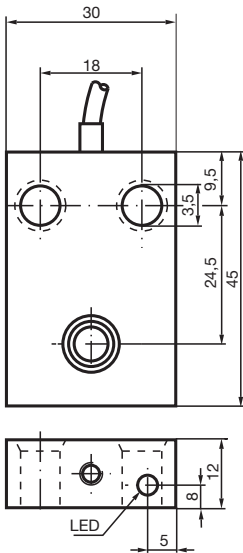


Inductive sensor NJ6-F-A2-3M

- Comfort series
- 6 mm flush
- 4-wire DC



Dimensions



Technical Data

General specifications

Rated operating distance	s_n	6 mm
Installation		flush
Output polarity		DC
Assured operating distance	s_a	0 ... 4.8 mm
Actual operating distance	s_r	5.4 ... 6.6 mm typ.
Reduction factor r_{Al}		0.22
Reduction factor r_{Cu}		0.2
Reduction factor r_{304}		0.7
Output type		4-wire

Nominal ratings

Operating voltage	U_B	10 ... 60 V DC
Switching frequency	f	0 ... 500 Hz
Hysteresis	H	0 ... 0.3 typ. 0.1 %

Release date: 2022-06-30 Date of issue: 2022-06-30 Filename: 037199_eng.pdf

Refer to "General Notes Relating to Pepperl+Fuchs Product Information".

Pepperl+Fuchs Group
www.pepperl-fuchs.com

USA: +1 330 486 0001
fa-info@us.pepperl-fuchs.com

Germany: +49 621 776 1111
fa-info@de.pepperl-fuchs.com

Singapore: +65 6779 9091
fa-info@sg.pepperl-fuchs.com

PF PEPPERL+FUCHS

Technical Data

Reverse polarity protection		reverse polarity protected
Short-circuit protection		pulsing
Voltage drop	U_d	$\leq 3 \text{ V}$
Operating current	I_L	0 ... 200 mA
No-load supply current	I_0	$\leq 20 \text{ mA}$
Time delay before availability	t_v	$\leq 15 \text{ ms}$
Switching state indicator		LED, yellow
Functional safety related parameters		
MTTF _d		690 a
Mission Time (T _M)		20 a
Diagnostic Coverage (DC)		0 %
Compliance with standards and directives		
Standard conformity		
Standards		EN 60947-5-2:2007 IEC 60947-5-2:2007
Approvals and certificates		
UL approval		cULus Listed, General Purpose
CSA approval		cCSAus Listed, General Purpose
CCC approval		Certified by China Compulsory Certification (CCC)
Ambient conditions		
Ambient temperature		-25 ... 70 °C (-13 ... 158 °F)
Mechanical specifications		
Connection type		cable PUR , 3 m
Core cross section		0.34 mm ²
Housing material		PBT
Sensing face		PBT
Degree of protection		IP67

Connection

